



# CLOSING REMARKS

Margaret Tansey & Shawn Menard





# SHIH Primary Care Team

- Thank you
- Next steps



SENIORS HEALTH  
INNOVATIONS HUB  
(SHIH)





SENIORS HEALTH  
INNOVATIONS HUB  
(SHIH)



# THANK YOU Volunteers!!

**Southminster United Church**

**Mike  
Brian  
Louise  
Nancy W.**

**OSCA - The Firehall**

**Robin  
Darcy**





SENIORS HEALTH  
INNOVATIONS HUB  
(SHIH)



# **THANK YOU Volunteers!!**

## **Community**

**Peter H.**

**Maura**

**Alixé**

**Peter W.**

**Curt**

**Karen**

**Many, many community organizations**

## **Shawn Menard's Office**

**Shawn**

**Miles**

**Hannah**







# SHIH Primary Care Team



SENIORS HEALTH  
INNOVATIONS HUB  
(SHIH)



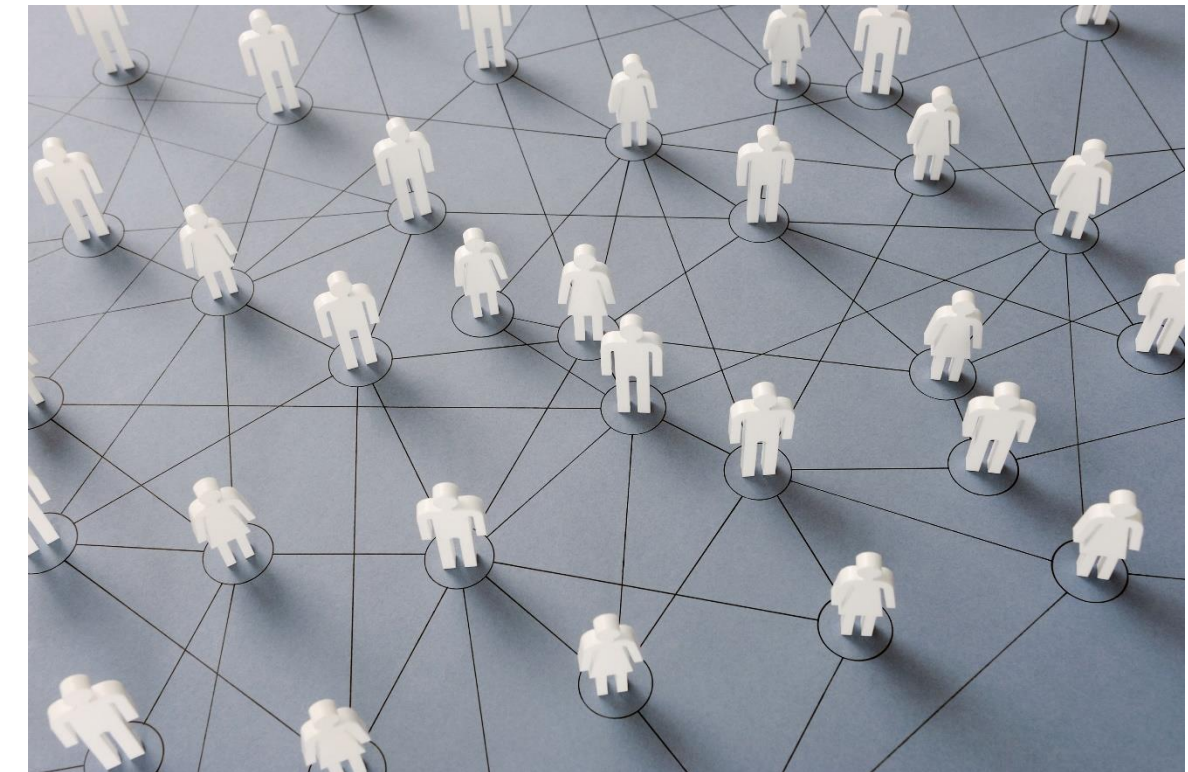
**Margaret Tansey, Lead and Chair, SHIH Steering Committee**

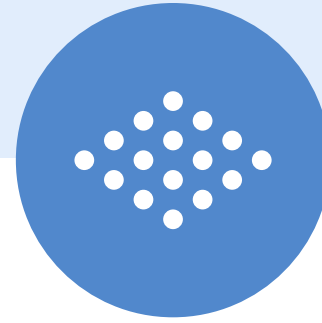
**Patricia Eakins, Lead Forum**

**Anna Cuylits**

**Carolyn Inch**

**Advisor: Nancy Watters**





**THANK  
YOU!**



SENIORS HEALTH  
INNOVATIONS HUB  
(SHIH)

